

Falls Meadow

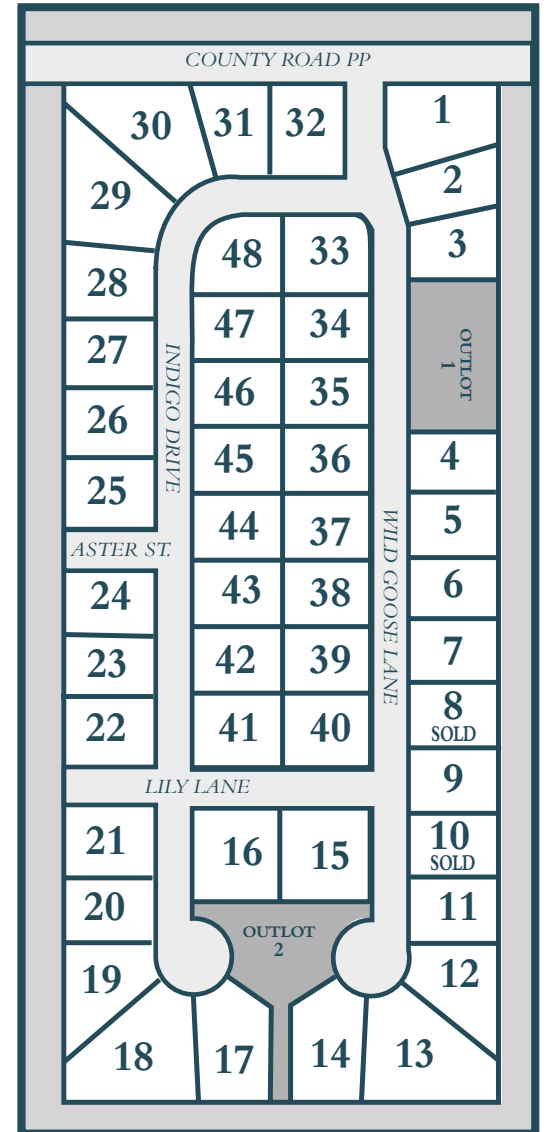
City of Sheboygan Falls

E	1	\$59,900	E	17	\$74,900	E	33	\$64,900
E	2	\$59,900	E	18	\$79,900	E	34	\$64,900
E	3	\$59,900	E	19	\$74,900		35	\$64,900
W	4	\$59,900	E	20	\$64,900		36	\$64,900
W	5	\$59,900	E	21	\$64,900		37	\$64,900
W	6	\$59,900		22	\$64,900		38	\$64,900
W	7	\$59,900		23	\$64,900		39	\$64,900
W	8	SOLD		24	\$64,900		40	\$64,900
W	9	\$59,900	E	25	\$64,900		41	\$64,900
W	10	SOLD	E	26	\$64,900		42	\$64,900
E	11	\$59,900		27	\$64,900	E	43	\$64,900
E	12	\$69,900		28	\$64,900	E	44	\$64,900
E	13	\$79,900		29	\$69,900		45	\$64,900
E	14	\$74,900		30	\$69,900		46	\$64,900
	15	\$69,900		31	\$64,900	W	47	\$64,900
	16	\$69,900		32	\$64,900	W	48	\$64,900

E = Exposed Basement W = Walk-Out Basement

HOME/LOT PACKAGES AVAILABLE

- City Water/Sewer Lateral to Lot
- 25' Front Yard Setback
- 30' Rear Yard Setback
- 10' Side Yard Setback



920-226-4062

postumahomes.com

Find us on



POSTHUMA
— HOMES —



SHEBOYGAN COUNTY
HOME BUILDERS
ASSOCIATION



WISCONSIN
BUILDERS
ASSOCIATION