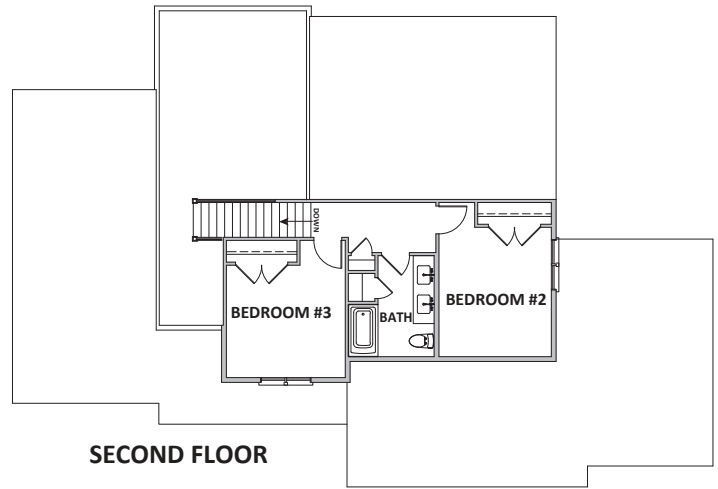
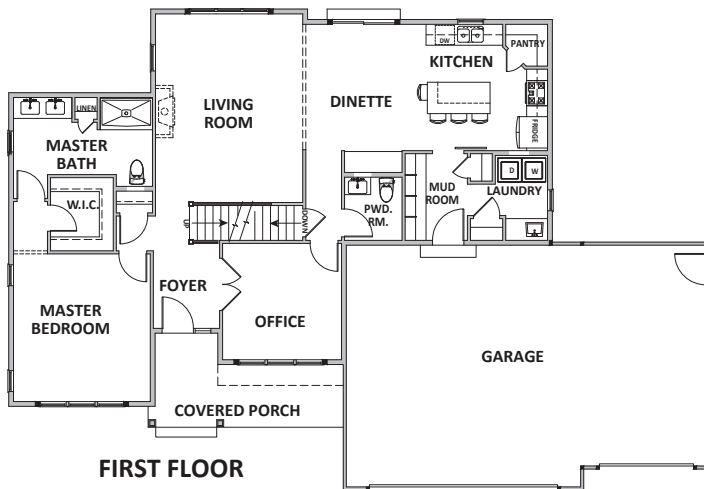


Harper

1,941 sq. ft.



STANDARD FEATURES

- Egress Window and Window Well
- Poured Concrete Driveway
- 9' Exterior Walls
- 2x6 Walls w/ Tyvek House Wrap
- Fiberglass Exterior Door
- Double 4" Vinyl Siding
- Gable End Vinyl Shakes or board and batten
- LP SmartSide Corners, Trim Boards, Window & Door Trim
- CertainTeed Landmark Dimensional Shingles
- 5" Aluminum Seamless Gutters
- Wrapped Porch Posts
- Insulated Two-sided Steel Garage Doors with Keyless Entry and Remotes
- Solid Core Doors
- Wide Base & Casing
- Maple Cabinets
- Quartz Countertops
- Luxury Vinyl Plank Flooring
- Carpet in Bedrooms
- 3" Closed Cell Spray-Foam in Joist End
- R-50 Jetstream Fiberglass in Attic
- R-19 Batts in Exterior Walls
- Recessed Lighting
- 2 Switch Fan/Lights in all Bedrooms
- Designer Switches
- 200 Amp Panel
- Kohler Fixtures
- Sterling Tub Surrounds
- Water Softener Included
- 50 Gallon Water Heater
- 2 Exterior Hydrants
- Water Line to Refrigerator
- Rough-in for Basement Bathroom
- 96% Efficient Furnace
- 14 SEER Central Air
- Gas and Electric Supply to Stove and Dryer
- Garage Floor Drains



POSTHUMA
— HOMES —

920-226-4062 • posthumahomes.com

Find us on

